



EMIRATES SPECIAL VEHICLES

INDEX

ABOUT US

- ESV Overview 4
- Vision and Mission 6
- Manufacturing Facility 9

PROCESS

- Armoring Process 11
- Advantage 14
- Order Processing 15
- Investment in R & D 17

FINAL INSPECTION

34



EMIRATES SPECIAL VEHICLES

4



VEHICLE ARMORING PROCESS

11



LAND CRUISER

21



TITANIUM FALCON APC

19





ARMORED
SUVs

23



ARMORED
PICKUPS

25



ARMORED
AMBULANCE

27



ARMORED
CASH IN TRANSIT

29



ARMORED
VARIOUS
BUSES

31



CONVERSION
&
MODIFICATION

32



ABOUT US

Emirates Special Vehicles L.L.C manufactures and deals in special vehicles. The company has an integrated facility in the emirate of Ras Al Khaimah in U.A.E. our line-up includes Armoured Civilian Vehicles, Armoured Personnel Carriers, Cash in Transit (CIT) vehicles, Modifications & Conversions, Roll Over Protection System (ROPS). Supported by a team of engineers and qualified technicians, ESV can build and ship special vehicles to any part of the world. Commitment to quality and prompt delivery has won us the support of our customers.

ESV can supply steel, glass & products related to armouring / security industry.

ARMORED VEHICLES



ARMORED VEHICLES



ARMORED VEHICLES



MISSION

To be the first choice of customers for special vehicles.

VISION

To be a trailblazer in the industry. To be known for innovation and quality.

CORE VALUES

- Ethical business practices.
- Adherence to Law.
- Mutual respect.
- Care for environment.
- Sustainable growth by constant innovation.
- Commitment to quality.



**FINE
WORKMANSHIP**

**MANY ARE DRIVEN
BUT FEW ARE CHOSEN**



MANUFACTURING FACILITY

- Integrated facility with office, factory, showroom and accommodation in the same complex.
- Entire manufacturing done in-house.
- An ISO certified company.
- IATF 16949 Certified company.
- Complying with statutory HSE norms.
- Non polluting facility certified by Environmental Authority.
- Test track & ramp facility.





ARMORING
PROCESS

ESV has the capability to prototype and develop civilian vehicle from B2 to B7 level of protection and for military vehicles from STANAG level 1 to 3. All our work is done to international specifications and only the highest quality materials and glasses are used. Ballistic specifications are internationally recognized standards used when deciding on the level of armouring protection required. Tested & certified material used in production.

ARMOURING PROCESS



BALLISTIC CHART

Ammunition	NIJ	BS EN 1522	BS EN 1063 GLAZING	VSAG 12	PAS 300	BRV 2009 VPAM	STANAG 4569
12/70 BRENNKE SHOT GUN 1 SHOT GLAZING	-	-	-	VS SG1	BA-SG	-	-
12/70 BRENNKE SHOT GUN 3 SHOT GLAZING	-	-	-	VS SG2	-	-	-
.22 LR WIN	1	FB 1	BR 1	VS 1	-	VR 1	-
9mm Luger Parabellum, UZI	-	-	-	-	-	VR2	-
9mm Luger	-	FB 2	BR 2	VS 2	BA-A	VR3	-
0.357 Magnum	II	FB 3	BR 3	VS 3	BA-B	VR4	-
44 Magnum	III A	FB 4	BR 4	VS 4	BA-C	-	-
357 Magnum	-	-	-	VS 4	-	VR5	-
7.62mm x 39 PS ball AK47	-	-	-	VS 4 Plus	BA-F	VR6	-
5.56mm X 45 SS109 .223 REM, M855	-	FB 5	BR 5	VS 6	BA-G	VR7	L1
7.62mm x 51 ball M80 DM111	III	FB 6	BR 6	VS 6	BA-H	VR7	L1
5.56mm x 45 M193 SS92	-	-	-	VS 6 Plus	BA-J	-	L1
7.62mm x 39 API BZ AK47	-	FB 7	BR 7	VS 7	BA-L	VR8	L2
7.62mm x 51 AP P80, FNB (0.308 win)	-	FB 7	BR 7	VS 7	BA-M	VR9	-
7.62mm x 54 R B32 API	-	-	-	VS 8	BA-N	VR10	L3
7.62mm x 51 AP (WC) NAMMO AP8	-	-	-	VS 9	BA-P	VR11	L3
0.308" WIN (7.62x51) SWISS P AP	IV	-	-	-	-	VR12	-
0.5" WIN SWISS P PEN SNIPER	-	-	-	-	-	VR13	-
14.5 x 114 API B32	-	-	-	-	-	VR14	L4
Auto cannon 25mm x 137 APDS-T PMB073	-	-	-	-	-	-	L5

ARMORED ENHANCEMENTS



ADVANTAGES

- We are located in U.A.E., close to Europe & Africa.
- ESV uses tested and certified materials.
- Well experienced and certified technicians.
- Capability to invest in and execute large projects.
- Can do on-site work for strategic requirements.
- Verifiable references.
- ESV can supply materials, parts & accessories for armored vehicles.
- ESV offers prototyping services.

ORDER PROCESS

01

BUYER CONTACTS ESV
Buyer contacts sales team



02

SALES TEAM
Interacts with the buyer.
Proforma Invoice Issued



03

BUYER CONFIRMS
Sales Contract Signed



04

BUYER RESPONSIBILITY
Submits necessary papers for Government Approval



05

BUYER TRANSFERS PAYMENT



06

WORK ORDER ISSUED. VEHICLE WORK STARTS



07

RECEIVE GOVERNMENT APPROVAL



08

VEHICLE SHIPMENT



09

SHIPMENT OF DOCUMENTS



10

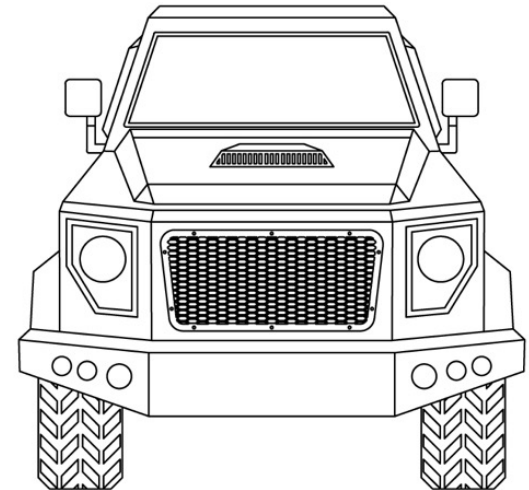
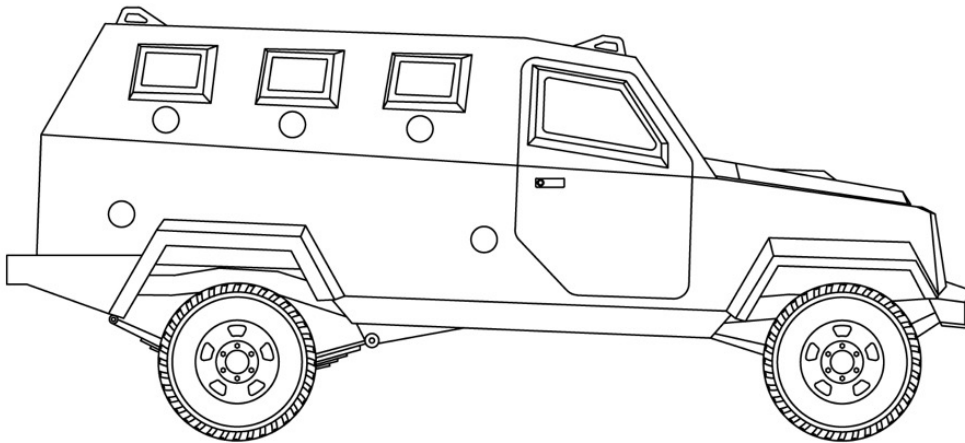


INVESTMENT
IN RESEARCH & DEVELOPMENT

INVESTMENT IN R&D

Our R&D department studies and provides customized armoring solution. ESV uses certified genuine materials sourced directly from the manufacturers/ main dealers. ESV is in the process of certifying a land cruiser according to VPAM standards. ESV can develop prototypes of civilian and military vehicles.

ESV offers weight reduction solution using composite materials. The company regularly collaborates with certifying agencies in Europe for testing of materials. Emirates Special Vehicles can assist in refurbishment of wheeled / tracked vehicles and vehicle integration.



TITANIUM
FALCON - APC



ARMORED ENHANCEMENTS

- High quality multilayered glass with anti spill shield to protect against shattering of glass
- 6 x viewing glass in the rear compartment (3 on each sides) and 1 x viewing glass in the rear door
- Suspension components are reinforced to compensate for additional weight of the vehicle
- 3 gun ports on each side of the vehicle. (Gun ports customizable)
- Armour overlap at all doors to prevent penetration through door posts and pillar
- Bonnet operated by durable gas struts and automatic engine bay light
- 4 point safety harness for rear occupants
- Dual Air-condition with separate controls
- Fuel tank lid operable from inside the cabin
- Customized durable interiors
- Retractable seats in the back

- Heavy duty front and rear ram bumper
- Floor covered with anti skid floor mat
- 2 x 12 volt DC Power socket
- Concealed rear towing hook
- All lamps covered by mesh
- Heavy duty door hinges. Two point dead lock system
- Steel RIM with heavy duty tires
- Two in the front and one rear door
- B6 level battery protection
- Central locking system
- Single piece wind screen
- AM/ FM and speakers
- 2 x side steps and 1 x rear step
- Rear view camera / Intercom system
- Cabin lamps & power mirrors

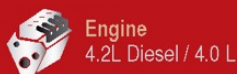


OPTIONAL

- Dual battery system
- Light bar / siren / search light
- Electric winch & Escape hatch
- Public address system
- 360° Turret / Weapon mount
- Camouflage / multicolour exterior paint



SPECIFICATIONS



Engine
4.2L Diesel / 4.0 L



Dimension -
Width - 1850mm
Length - 5250mm
Height - 2250mm



Armoring - B6



Transmission
Manual, Four Wheel Drive



Wheelbase - 3180mm



Brakes - 4 wheel anti-lock ventilated disc brakes; electronic front/rear proportioning



Fuel - Petrol / Deisel



Seat - 2 + Modular 6 seats in rear compartment (customizable)
High quality durable leather seats



Wheel/Tyres
Steel RIM with heavy duty tires.
Run flat system on all the tires.
Door mounted spare tire



ARMORED
LANDCRUISER



ARMORED ENHANCEMENTS

- Run flats on all Wheels
- ECM & Battery Protection
- Suspension upgrade
- Fuel Tank Protection
- Heavy duty Door Hinges
- Fuel Pipe Protection
- Intercom system
- Full Overlaps
- High quality glass
- Quality upholstery and near OEM finish



SPECIFICATIONS



Engine
4.0L, 4.2L, 4.6L, 5.7L



Armoring - B4 to B7



Transmission
Manual or Automatic,
4X4



Wheelbase - 2850mm



Wheel/Tyres
Steel RIM with heavy duty tires.
Run-flat system on all tires.



Fuel - Petrol / Deisel



Brakes
Heavy duty brake kit



ARMORED
OTHER SUVs



ARMORED ENHANCEMENTS

- Run flats on all Wheels
- ECM & Battery Protection
- Suspension upgrade
- Fuel Tank Protection
- Heavy duty Door Hinges
- Fuel Pipe Protection
- Intercom system
- Full Overlaps
- High quality glass
- Quality upholstery
- Near OEM finish

BASE VEHICLES

- Toyota land cruiser 76 Series
- Fortuner
- Sequoia
- Prado

- GMC
- Chevrolet
- Ford

SPECIFICATIONS



Engine
4.0L, 4.6L, 5.7L Gasoline
4.2L, 4.5L, Deisel



Armoring - B4 to B7



Transmission
Manual or Automatic,
4X4



Fuel - Petrol / Deisel



Wheel/Tyres
Steel / Alloy RIM with heavy duty tires.
Run-flat system on all tires.



Brakes
Heavy duty brake kit



ARMORED
PICK-UP



ARMORED ENHANCEMENTS

- Run flats on all wheel
- ECM & Battery Protection
- Suspension upgrade
- Fuel Tank Protection
- Heavy duty Door Hinges
- Fuel Pipe Protection
- Intercom system
- Steel Armor with full overlap
- High quality heavy duty armored glass
- Quality upholstery and near OEM finish
- Customization on the cargo deck possible
- Extra accessories

BASE VEHICLES

- Toyota Pickup : Hilux, Tundra, Revo, Land cruiser pickup
 - Mitsubishi Pickup : L200, L200 Sportero
 - Nissan Pickup : Navara, Titan, Patrol Pickup
- Single Cabin, Double Cabin & Crew Cabin

SPECIFICATIONS



Engine
2.0L, 2.5L, 2.6L, 2.7L, 3.0L



Armoring - B2 to B6



Transmission
Manual or Automatic



Fuel
Petrol : 4 Cylinder, 6 Cylinder & 8 Cylinder Engine
Deisel : 4 Cylinder, 6 Cylinder Engine



Wheel/Tyres
Steel / Alloy RIM with heavy duty tires.
Run-flat system on all tires.



Brakes
Heavy duty brake kit



ARMORED
AMBULANCE

STANDARD
AMBULANCE



ARMORED ENHANCEMENTS

Type of Ambulance:

- ICU or Patient transporter ambulance / armoured
- Un-armoured ambulance also available
- Equipped with essential equipment
- Customizable medical equipment

BASE VEHICLES

- Toyota land cruiser 200 series, 76 series & 78 series
- Hiace standard roof & high roof
- Hilux pickup
- Land cruiser 79 series pickup

SPECIFICATIONS



Engine

2.7 Gasoline, 2.4 Deisel,
4 cylinder, V6, V8



Transmission

Manual or Automatic
(Automatic available on Landcruiser 200 series only),
4X4



Wheel/Tyres

Steel RIM with heavy duty tires.
Run-flat system on all tires.



Brakes

Heavy duty brake kit



Armoring - B4 to B6



Fuel

Petrol / Deisel
2.7L Gasoline / 2.5L Deisel : Hilux
2.7L Gasoline / 2.5L, 3L Deisel : Hiace
4.0L Gasoline / 4.5L Deisel : Landcruiser 200 series
4.2L Deisel : Landcruiser 78 series



ARMORED
CASH IN TRANSIT



ARMORED ENHANCEMENTS

- Run flats on all Wheels
- ECM & Battery Protection
- Suspension upgrade
- Fuel Tank Protection
- Heavy duty Door Hinges
- Fuel Pipe Protection
- Intercom system
- Interlock system for added safety
- Steel Armored with full overlap
- High quality heavy duty glass
- Quality upholstery and near OEM finish
- Extensive customization
- Advanced electronic systems - Optional
- Pepper gas - Optional

BASE VEHICLE

- Toyota pickup
- Mitsubishi pickup
- Nissan pickup
- GMC
- Savana
- Chevrolet
- Express
- Peugeot Boxer
- Mercedes Sprinter
- Hyundai
- Toyota Vans

SPECIFICATIONS



Engine
4.0L, 4.2L, 4.6L, 5.7L



Armoring - B4 to B7



Transmission
Manual or Automatic,
4X4



Fuel - Petrol / Deisel



Wheel/Tyres
Steel RIM with heavy duty tires.
Run-flat system on all tires.



Brakes
Heavy duty brake kit



ARMORED
VARIOUS BUSES



ARMORED ENHANCEMENTS

- Run flats on all Wheels
- ECM & Battery Protection
- Suspension upgrade
- Fuel Tank Protection
- Heavy duty Door Hinges
- Fuel Pipe Protection
- Intercom system
- Full Overlaps
- High quality glass
- Quality upholstery and near OEM finish

BASE VEHICLE

- Toyota Hiace
- Coaster
- Nissan Civilian
- Rosa
- Chevrolet
- TATA
- Ashok Leyland
- Ford & GMC

SPECIFICATIONS



Engine
4 cylinder, V6, V8 and upward



Armoring - B2 to B6 level



Transmission
Manual or Automatic,
4X4



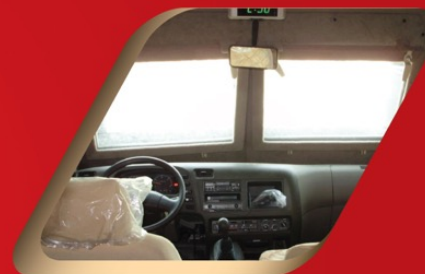
Fuel - Petrol / Deisel



Wheel/Tyres
Steel / Alloy RIM with heavy duty tires.
Run-flat system on all tires.



Brakes
Heavy duty brake kit



SPECIAL
PROJECTS



NISSAN PATROL
PROTECTION LEVEL- B7

SPECIAL
PROJECTS



TOYOTA COASTER
PROTECTION LEVEL- B4

SPECIAL
PROJECTS

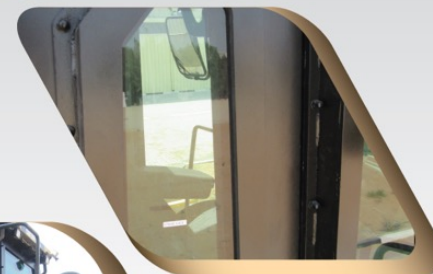


MAN TRUCK

PROTECTION LEVEL

STANAG LEVEL 2, ARMOURING OF CABIN & CRITICAL PARTS

SPECIAL PROJECTS



WHEEL LOADER

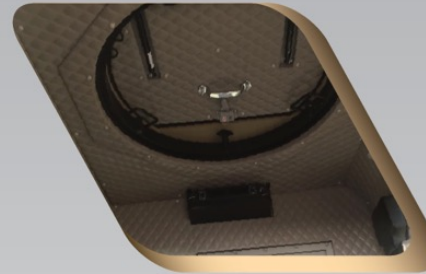
PROTECTION LEVEL

STANAG LEVEL 2, ARMOURING OF CABIN & CRITICAL PARTS

**SPECIAL
PROJECTS**

ARMOURED LAND CRUISER PICKUPS

PROTECTION LEVEL- B6



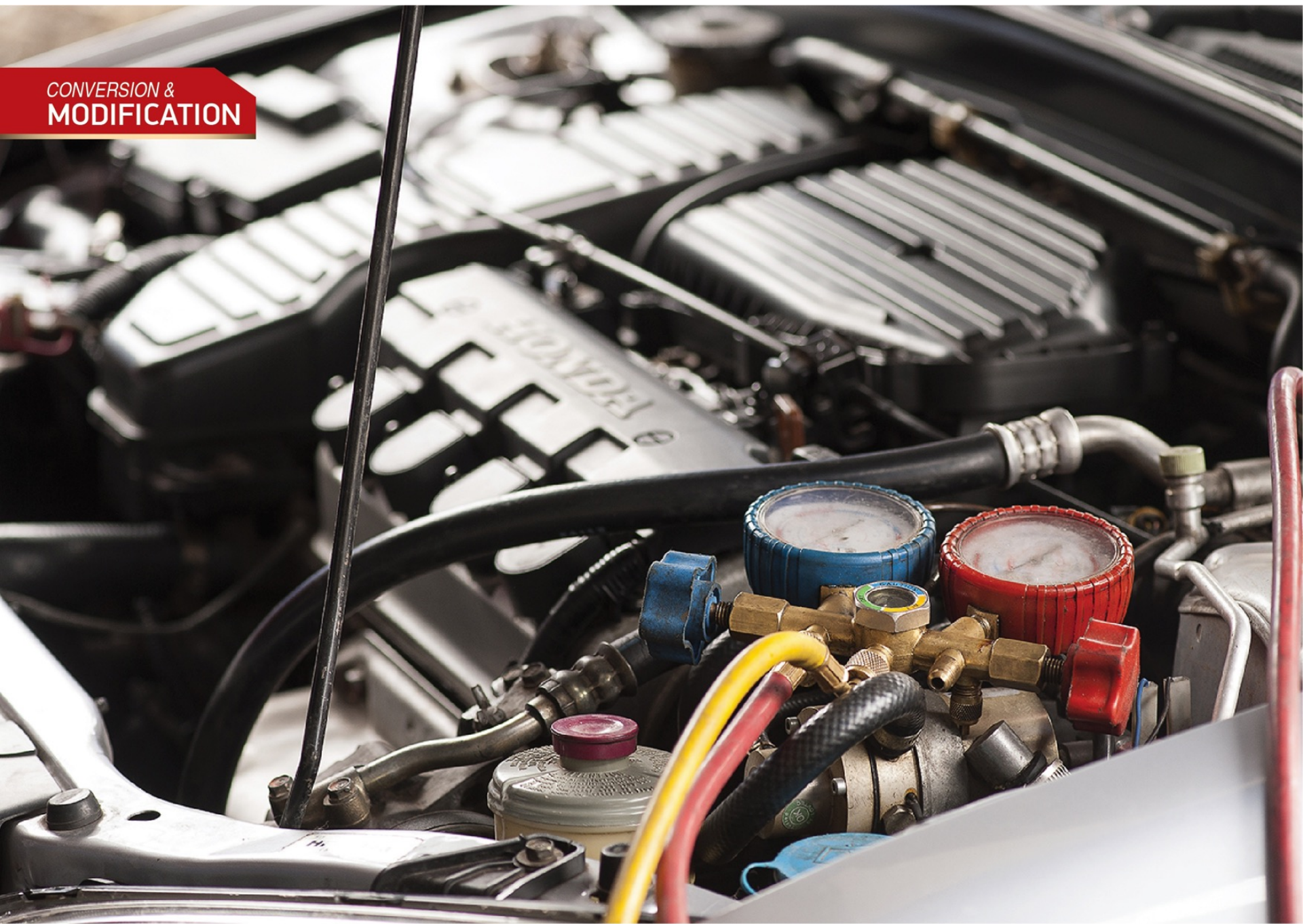
LIGHT
WEIGHT ARMOUR



LEXUS LX 570

PROTECTION LEVEL- B4

CONVERSION &
MODIFICATION



CONVERSION & MODIFICATION

Emirates Special Vehicles can do modification and conversion of vehicles. Vehicles can be modified into mobile units like blood bank, library, advertising vehicle etc., ESV can do electric and hybrid car conversions.

Recently ESV has added to its portfolio mobility vehicles for the disabled.

CUSTOMIZATION

- Fitting of accessories
- Express armouring using kits
- Roll over protection
- Fitting of customized boxes on cargo decks
- Police vehicle modification
- Pickups customization
- 6X6 and 4X4 conversions

Vehicle
4X4 Conversions



4X4 CONVERSION
TOYOTA COASTER



4X4 CONVERSION
TOYOTA HIACE

Vehicle
6X6 Conversions



6X6 CONVERSION

FORD F550/150/350



6X6 CONVERSION

TOYOTA LAND CRUISER PICKUP

REFURBISHMENT
SERVICES



**REFURBISHMENT
OF LUXURY SEDAN VEHICLES**

REFURBISHMENT OF LUXURY SEDAN VEHICLES

MERCEDES S600, BMW 7 SERIES, AUDI A8

PROTECTION LEVEL- B6 & B7

FINAL INSPECTION

The final inspection is the last step before delivery. The following tests are done to ensure that an armoured vehicle is roadworthy in every aspect. Below mentioned tests are repeated for three days to ensure consistency.

DRIVE TEST

There are four sub tests in this. They are Suspension test, Brake test, Ramp test and off-road test.

- Suspension test : To check proper functioning of the suspension system after armouring a vehicle.
- Brake test : To test the efficiency of the brake system.
- Ramp test : To check if the hand brakes can bear the additional weight due to armouring.
- Off road : To check the manoeuvrability of the vehicle in an uneven terrain.

ELECTRICAL TEST

This is done to check entertainment system, sensors, camera, tire pressure monitoring system, communication system etc., ESV uses efficient / appropriate diagnostic equipment for troubleshooting.

INTERIOR CHECK

This is done to ensure the quality of upholstery and plastic interiors. Laser light is used to look for tiny cracks, fissures in the plastic interior. The car interior is completely vacuumed and sanitised using disinfectant.

HIGH PRESSURE WATER LEAK TEST AND EXTERIOR WASH

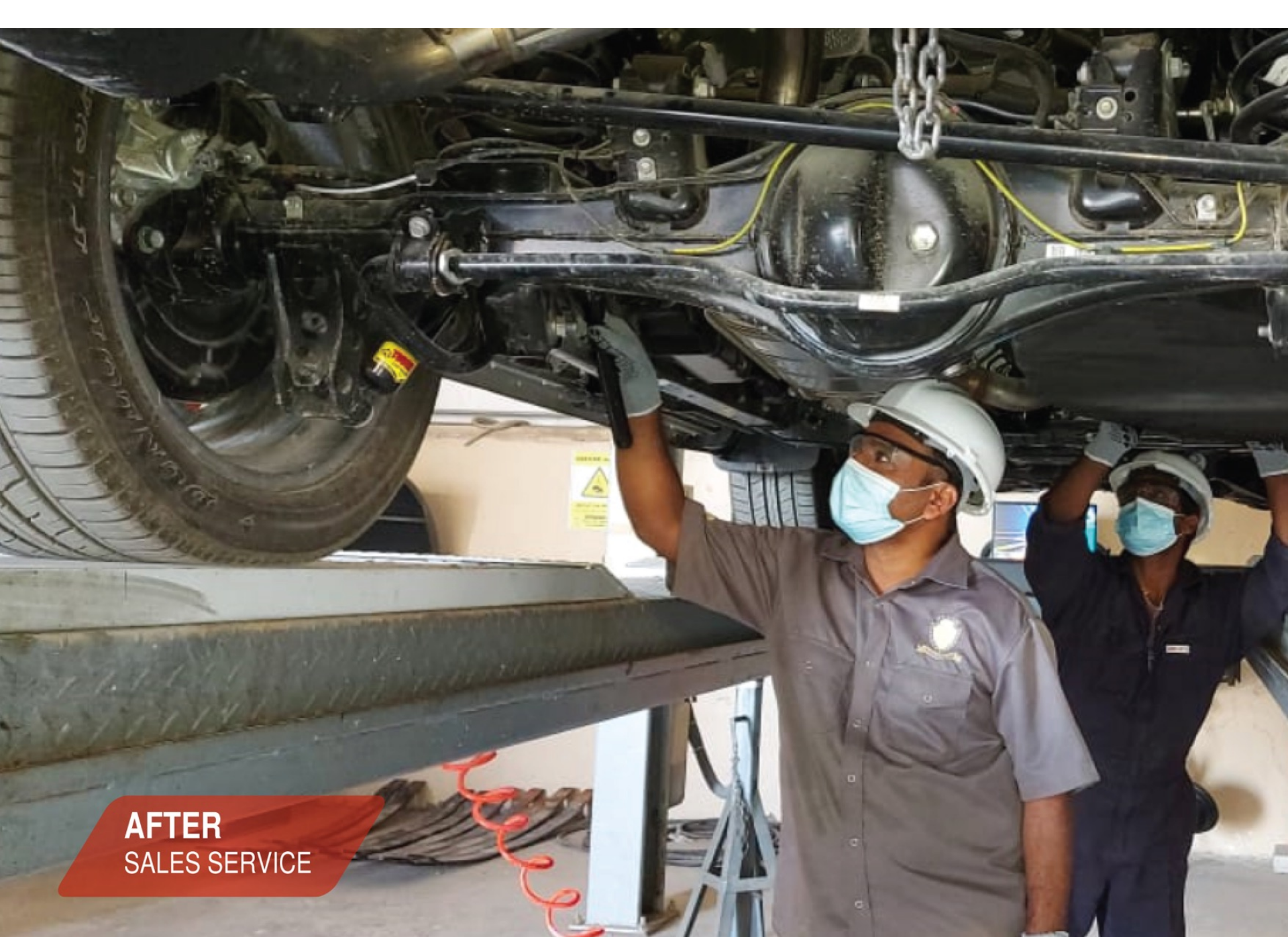
This is to check for leaks or unevenness in a vehicle. Vehicle exterior is completely inspected for scratches and dents & blemish if any is corrected.

DOCUMENTATION

The entire process is documented for future reference. The final PDI report is written on a CD and given to the customer. The entire QC is done by quality controllers.

AFTER SALES SERVICE

- Network of Garages all over the world for after sales service & Repairs
- Service and repair by trained technicians
- Shipment of original parts from ESV



AFTER
SALES SERVICE

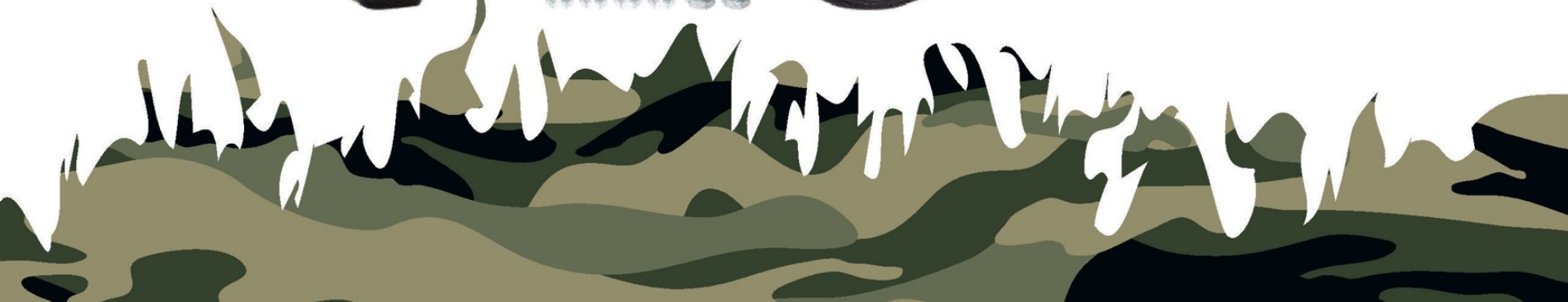
PARTS AND ACCESSORIES

ALL AUTOMOTIVE PARTS

- Tires
- Batteries
- Workshop equipment

ARMOURING

- Glass
- Steel Kits
- Brake kits
- Suspension
- Run-flats
- Gun mount
- Turrets
- Gun ports



INDUSTRIAL LICENCE رخصة صناعية

GOVERNMENT OF RAS AL KHAIMAH حكومة رأس الخيمة



LICENCE NO	131	رقم الرخصة
TYPE	Non-Freezone	التصنيف شركة محلية
LEGAL TYPE	Limited Liability Company - LLC	الشكل القانوني شركة ذات مسؤولية محدودة
LICENSEE	Emirates Special Vehicles LLC	صاحب الرخصة الإمارات للمركبات الخاصة ش.م.م
OPERATING NAME	Emirates Special Vehicles LLC	الإسم التجاري الإمارات للمركبات الخاصة ش.م.م
ADDRESS	Plot No. 111 Al Hamra Industrial Zone-WF2 RAK, United Arab Emirates	العنوان قطعة أرض رقم 111 منطقة الحمرا الصناعية رأس الخيمة، الإمارات العربية المتحدة
ACTIVITY	Automobile Assembling with Special Specifications and Automobile Assembling	النشاط تجميع سيارات الركاب تجهيز سيارات الركاب ذات المواصفات الخاصة
MANAGER	Abubucker Habib Mohamed	المدير أبو بكر حبيب محمد
ISSUE DATE	26-07-2006	تاريخ الإصدار
EXPIRY DATE	25-07-2020	تاريخ الإنتهاء
REMARKS	Amended the partners list, changed the activity and manager. Changed the trade name from Emirates Rubber Factory LLC to new name Changed the Manager on 30 September 2019 The Licensee must obtain the required approvals from the UAE Competent Government Authorities, as applicable	ملاحظات تعديل أسماء الشركاء والنشاط والمدير تغيير الاسم التجاري من مصنع الامارات للمطاط ش.م.م إلى اسم جديد تغيير المدير في 30/سبتمبر/2019 على المرخص له الحصول على كافة الموافقات اللازمة من الجهات الحكومية المختصة في دولة الإمارات العربية المتحدة حسب الاقتضاء

حكومة رأس الخيمة
Government of Ras Al Khaimah



هيئة حماية البيئة والتنمية
Environment Protection & Development Authority

EMIRATES SPECIAL VEHICLES LLC

IDS | NA | NA

Environmental Permit

2020 DEC



REGISTRAR OF COMPANIES مسجل الشركات

This document is electronically issued by Ras Al Khaimah Economic Zone Authority. Document Reference no.: 207925-IGa-KYU-10703045
For verification purpose, please go to <http://rakzone.com/raak> and enter the above document reference number.
صادرة عن هيئة ملاحق رأس الخيمة الاقتصادية، وشاغرة الجميع القوانين والأنظمة واللوائح الخاصة بالهيئة.
Issued by Ras Al Khaimah Economic Zone Authority and subject to all Laws, Regulations & Rules that belong to the authority.

CERTIFICATE

Management system as per
ISO 9001 : 2015

In accordance with TÜV NORD CERT procedures, it is hereby certified that

Emirates Special Vehicles LLC
P.B No- 6589, PL 111
Al-Hamra Industrial Zone-NFZ
P.O. Box 6589, Ras Al Khaimah
United Arab Emirates



applies a management system in line with the above standard for the following scope

**Modification, Conversion, Armouring, Assembling And Re-Assembling
Of Automobiles To Provide Vehicles With Customised Specifications**

Certificate Registration No. 44 100 17580126
Audit Report No. 5800 7262

Valid from 2018-02-11
Valid until 2021-02-10

Certification Body
at TÜV NORD CERT GmbH

Abu Dhabi, 2018-02-11

This certification was conducted in accordance with the TÜV NORD CERT auditing and certification procedures and is subject to regular surveillance audits.

TÜV NORD CERT GmbH Langemarckstraße 20 45141 Essen www.tuev-nord-cert.com



CERTIFICATE

Management system as per
ISO 14001 : 2015

In accordance with TÜV NORD CERT procedures, it is hereby certified that

Emirates Special Vehicles LLC
P.B No- 6589, PL 111
Al-Hamra Industrial Zone-NFZ
P.O. Box 6589, Ras Al Khaimah
United Arab Emirates



applies a management system in line with the above standard for the following scope

**Modification, Conversion, Armouring, Assembling And Re-Assembling
Of Automobiles To Provide Vehicles With Customised Specifications**

Certificate Registration No. 44 104 17580126
Audit Report No. 5800 7263

Valid from 2018-02-11
Valid until 2021-02-10

Certification Body
at TÜV NORD CERT GmbH

Abu Dhabi, 2018-02-11

This certification was conducted in accordance with the TÜV NORD CERT auditing and certification procedures and is subject to regular surveillance audits.

TÜV NORD CERT GmbH Langemarckstraße 20 45141 Essen www.tuev-nord-cert.com



TÜV NORD

CERTIFICATE

Management system as per
BS OHSAS 18001 : 2007

In accordance with TÜV NORD CERT procedures, it is hereby certified that

Emirates Special Vehicles LLC
P.B No- 6589, PL 111
Al-Hamra Industrial Zone-NFZ
P.O. Box 6589, Ras Al Khaimah
United Arab Emirates



applies a management system in line with the above standard for the following scope

**Modification, Conversion, Armouring, Assembling And Re-Assembling
Of Automobiles To Provide Vehicles With Customised Specifications**

Certificate Registration No. 44 116 17580126
Audit Report No. 5800 7284

Valid from 2018-02-11
Valid until 2021-02-10

Certification Body
at TÜV NORD CERT GmbH

Abu Dhabi, 2018-02-11

This certification was conducted in accordance with the TÜV NORD CERT auditing and certification procedures and is subject to regular surveillance audits.

TÜV NORD CERT GmbH

Langemarckstraße 20

45141 Essen

www.tuev-nord-cert.com



Certificate of Registration

This certificate has been awarded to

EMIRATES SPECIAL VEHICLES LLC

Plot No.11, P.O. Box 6589, Al Jazeera Al Hamra Industrial Area, Ras Al
Khaimah, United Arab Emirates

in recognition of the organization's Quality Management System which complies with

IATF 16949:2016

The scope of activities covered by this certificate is defined below

**Body Building of Passenger Vehicles
(Excludes Clause 8.3 under Product Design)**

Certificate Number: Date of Issue of Certification Cycle:

109711/A/0001/SM/En

22 June 2020

Issue No:

Expiry Date:

IATF No:

1

21 June 2023

0368777

Issued by:

On behalf of the Schemes Manager





This is to certify that

EMIRATES SPECIAL VEHICLES LLC

Plot 111,
Al Jazzer Al Hamra(Non Free Zone),
Near Mabani Steel,
Ras Al Khaimah,
United Arab Emirates.

is now part of the Dun & Bradstreet Global Database

D-U-N-S Number®: 56-117-6299

A handwritten signature in black ink, appearing to read 'Manjeet Singh Chhabra'.

Manjeet Singh Chhabra
Managing Director

CRIF GULF DWC LLC (DUN & BRADSTREET NETWORK PARTNER)

August 21st , 2016.



لجنة السلع والبضائع الخاضعة للرقابة الاستيراد والتصدير
COMMITTEE FOR GOODS & MATERIALS SUBJECT TO IMPORT & EXPORT



Export / Import Armed Vehicles

Request Number : A00159/20 Date : 11/05/2020
Permit Type : Export

Number Of Armed Vehicle	1
Armoring Company	EMIRATES SPECIAL VEHICLES LLC
Invoice No	ESV20/01/001
Exporting Company	RIMARA INTERNATIONAL FZE
Carriers	AUTO FREIGHT SHIPPING SERVICES
Importing Company	MINISTRY OF NATIONAL DEFENCE OF ANGOLA
End User	MINISTRY OF NATIONAL DEFENCE OF ANGOLA
Purpose Of Use	Protection

Company Representative :

Name : ABUBUCKER HABIB MOHAMED
Tel Number : +971558006563

Shipping Route :

Transportation Method	Land
Shipping From :	United Arab Emirates
Port From :	Jebel Ali Shipping Village
Shipping To	Port To
Angola	LUANDA

Request Details :

Vehicle Type	Chassis Number	Vehicle Color	HSCode	Specification	Other Equipment Types
Car	JTJHY00W2L4319877	Black	87032311	B6 Level Armoured	



مؤسسة تنظيم الصناعة الأمنية
SECURITY INDUSTRY REGULATORY AGENCY



التاريخ : 11:01:21 08/06/2020 Date : 36815551 : رقم التحقق الإلكتروني eVerification No. :
المرجع : 2020/14/144/65779 Certificate No. : 443D735D : رمز المرور Passcode :
السيد / ميناء جبل علي المحترم
تحية طيبة وبعد،،،

الموضوع : تصدير مركبات مصفحة

نود إعلامكم بأنه لا مانع لدينا من تصدير شحنة مركبات مصفحة المذكورة بياناتها أدناه والمتعلقة بالصناعة الموجودة لديكم إلى (أنغولا)، وعليه فلا مانع من استكمال بنية إجراءاتكم.
اسم صاحب الشحنة : الإمارات للمركبات الخاصة ش ذ م م

الرقم	تفاصيل الشحنة	رقم القاعدة	السنة	اللون
1	لكزس LX 570	JTJHY00W2L4319877	2020	أسود

وتفضلوا بقبول فائق الاحترام والتقدير ،،،



Printed Date : 08/06/2020 11:03:21

System generated certificate does not require signature

To verify the content of this certificate visit: <https://portal.sira.gov.ae/web/Registration/DocumentVerification> and enter the eVerification No. and Passcode.

+971 4 7023 666

+971 4 7023 555

info@sira.gov.ae

30306 دبي، إم.ع.أ.

تاريخ الطباعة : 08/06/2020 11:03:21

وثيقة صادرة ومعتمدة من النظام ولا تتطلب توقيع



sira.gov.ae

CLIENTS SPREAD ACROSS

- 🌍 African Countries
- 🌏 Asia
- 🌍 MENA



Google Maps GPS Coordinates

Latitude: 25.651968, Longitude: 55.786014



EMIRATES SPECIAL VEHICLES L.L.C.

P.O.Box 6589, RAKIA Industrial Area,

Al Jazirah Al Hamra, Ras al Khaimah. UAE.

Tel : +971 7 243 8820 | Fax : +971 7 243 7301,

titanium@esv.ae | www.esv.ae



Follow us on /     /Emirates Special Vehicles

THANK YOU